

深圳市亿显国际科技有限公司 ShenZhen Yes-Display International Technology CO.,LTD.			HDMI 触摸显示一体屏 <b>HDMI Touch Display Screen</b>	
File NO.		REV	A/01	<a href="http://www.yes-display.com">http://www.yes-display.com</a>

# HDMI Display Driver Board

**Module:YS-HD0700-LT19C01 V1.0**

Designed by	R&D Checked by	Quality Department by	Approved by

Approval by Customer:

OK

NG, Problem survey

Approved By\_\_\_\_\_



<b>深圳市亿显国际科技有限公司</b> <b>ShenZhen Yes-Display International Technology CO.,LTD.</b>			<b>HDMI 触摸显示一体屏</b> <b>HDMI Touch Display Screen</b>	
<b>File NO.</b>		<b>REV</b>	<b>A/01</b>	<a href="http://www.yes-display.com">http://www.yes-display.com</a>

## 目录 / Contents

List	Description	Page No.
	封面 / Cover	1
	版本记录 / Revision Record	2
	目录 / Contents	3
1	硬件介绍 / Hardware Introduction	4
2	产品应用 / Product Application Diagram	6
3	产品图纸 / product drawing	8
4	接口定义 / Interface Definition	9
5	可靠性实验测试 / Reliability Test Conditions and Methods	11
6	包装方式 / Packing Method	12

## 1. 硬件简介 / Hardware Introduction

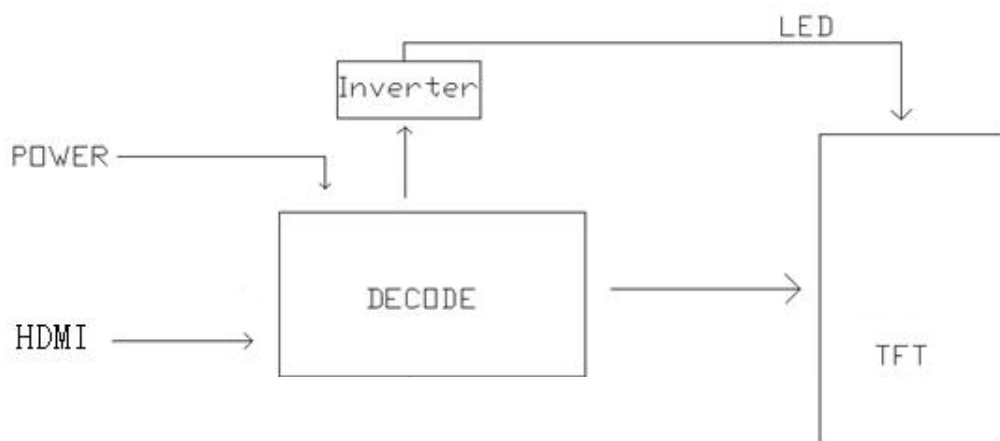
### 1.1 硬件指导 / Hardware Introduction



深圳市亿显国际科技有限公司 ShenZhen Yes-Display International Technology CO.,LTD.			HDMI 触摸显示一体屏 <b>HDMI Touch Display Screen</b>	
File NO.		REV	A/01	<a href="http://www.yes-display.com">http://www.yes-display.com</a>

## 2. 产品应用 / Product Application Diagram

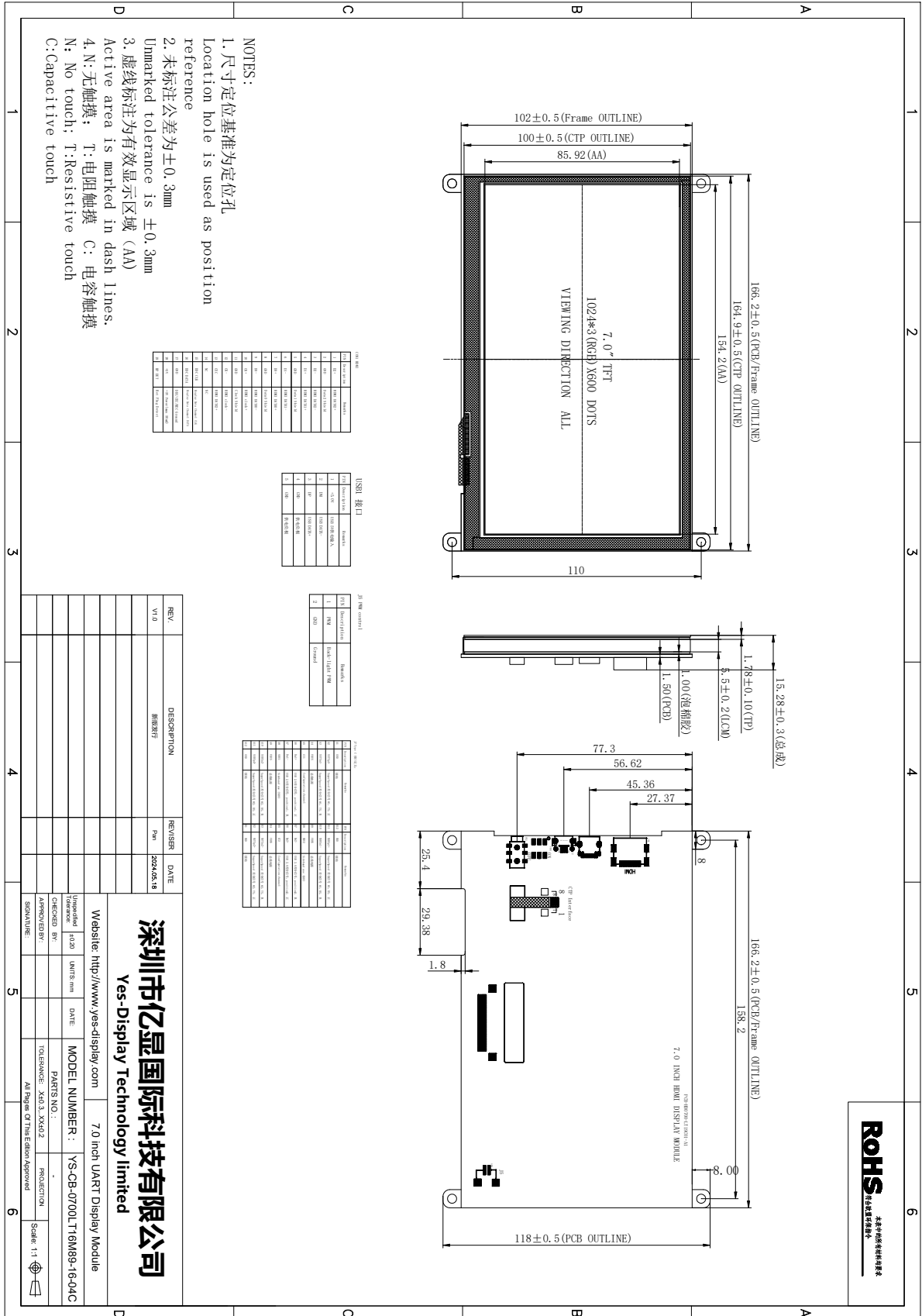
### 2.1 Block Dimension



### 2.2 技术参数

参数 / Parameters			备注 / Remarks
外形尺寸	Outline Dimension (W*H*T)	166.20 x 118.00 x15.28	mm
AA 区尺寸	Active Area (W*H)	154.08 (W) × 85.92 (H)	mm
分辨率	Resolution	1024×600	DOTS
OSD 菜单	OSD MENU	×	
音频输出	Audio Output	√	
接口	Interface	HDMI	
视角	Viewing Angle	IPS	
PWM 控制	PWM Input	√	
亮度	Brightness	500CD/m2	
工作电压	Operating Voltage	5.0V	
温度	Operating temperature	-20~70 °C	
	Storage temperature	-30~80 °C	

3. 产品图纸 / product drawing



深圳市亿显国际科技有限公司 ShenZhen Yes-Display International Technology CO.,LTD.			HDMI 触摸显示一体屏 <b>HDMI Touch Display Screen</b>	
File NO.		REV	A/01	<a href="http://www.yes-display.com">http://www.yes-display.com</a>

## 4. 接口定义 / Interface Definition

### 4.1 PWM 接口定义 / PWM Interface Definition

序号 / PIN	定义/ Definition	功能描述 / Functional Description
1	PWM	PWM Dimming Control
2	GND	供电负极 / Power ground

### 4.2 HDMI 接口定义 / DHMI Interface Definition

PIN NO.	PIN NAME	DESCRIPTION
1	D2+	HDMI DATA2+
2	GND	DATA2 Shield
3	D2-	HDMI DATA2-
4	D1+	HDMI DATA1+
5	GND	DATA1 Shield
6	D1-	HDMI DATA1-
7	D0+	HDMI DATA0+
8	GND	DATA2 Shield
9	D0-	HDMI DATA0-
10	CK+	HDMI clock+
11	GND	Clock Shield
12	CK-	HDMI clock-
13	CEC	Consumer Electronics Control
14	NC	NC
15	DDC CLK	Display Data Chanel CLK
16	DDC DATA	Display Data Chanel DATA
17	GND	DDC/CEC/HEC Ground
18	+5V	+5V Power(max 50MA)
19	HP DET	Hot Plug Detect

### 4.3 USB 接口定义 / USB Interface Definition

序号 / PIN	定义/ Definition	功能描述 / Functional Description
1	+5V	+5V input
2	DM	DATA- (USB)
3	DP	DATA+ (USB)

<b>深圳市亿显国际科技有限公司</b> <b>ShenZhen Yes-Display International Technology CO.,LTD.</b>			<b>HDMI 触摸显示一体屏</b> <b>HDMI Touch Display Screen</b>	
<b>File NO.</b>		<b>REV</b>	<b>A/01</b>	<b>http://www.yes-display.com</b>

4	GND	供电负极 / Power ground
5	GND	供电负极 / Power ground

#### 4.4 USB (TYPE-C) 接口定义 / USB Interface Definition

J7 Type C 接口定义:

PIN	Description	Remarks	PIN	Description	Remarks
A1	GND	接地	B12	GND	接地
A2	SSTXp1+	SuperSpeed 差分信号 #1, TX, 正	B11	SSRXp1+	SuperSpeed 差分信号 #1, RX, 正
A3	SSTXn1-	SuperSpeed 差分信号 #1, TX, 负	B10	SSRXn1-	SuperSpeed 差分信号 #1, RX, 负
A4	VBUS	总线电源	B9	VBUS	总线电源
A5	CC1	Configuration channel	B8	SBU2	Sideband use (SBU)
A6	Dp1+	USB 2.0差分信号, position1, 正	B7	Dn2-	USB 2.0差分信号, position2, 负
A7	Dn1-	USB 2.0差分信号, position1, 负	B6	Dp2+	USB 2.0差分信号, position2, 正
A8	SBU1	Sideband use (SBU)	B5	CC2	Configuration channel
A9	VBUS	总线电源	B4	VBUS	总线电源
A10	SSRXn2-	SuperSpeed 差分信号 #2, RX, 负	B3	SSTXn2-	SuperSpeed 差分信号 #2, TX, 负
A11	SSRXp2+	SuperSpeed 差分信号 #2, RX, 正	B2	SSTXp2+	SuperSpeed 差分信号 #2, TX, 正
A12	GND	接地	B1	GND	接地

## 5. 可靠性实验测试 / Reliability Test Conditions and Methods

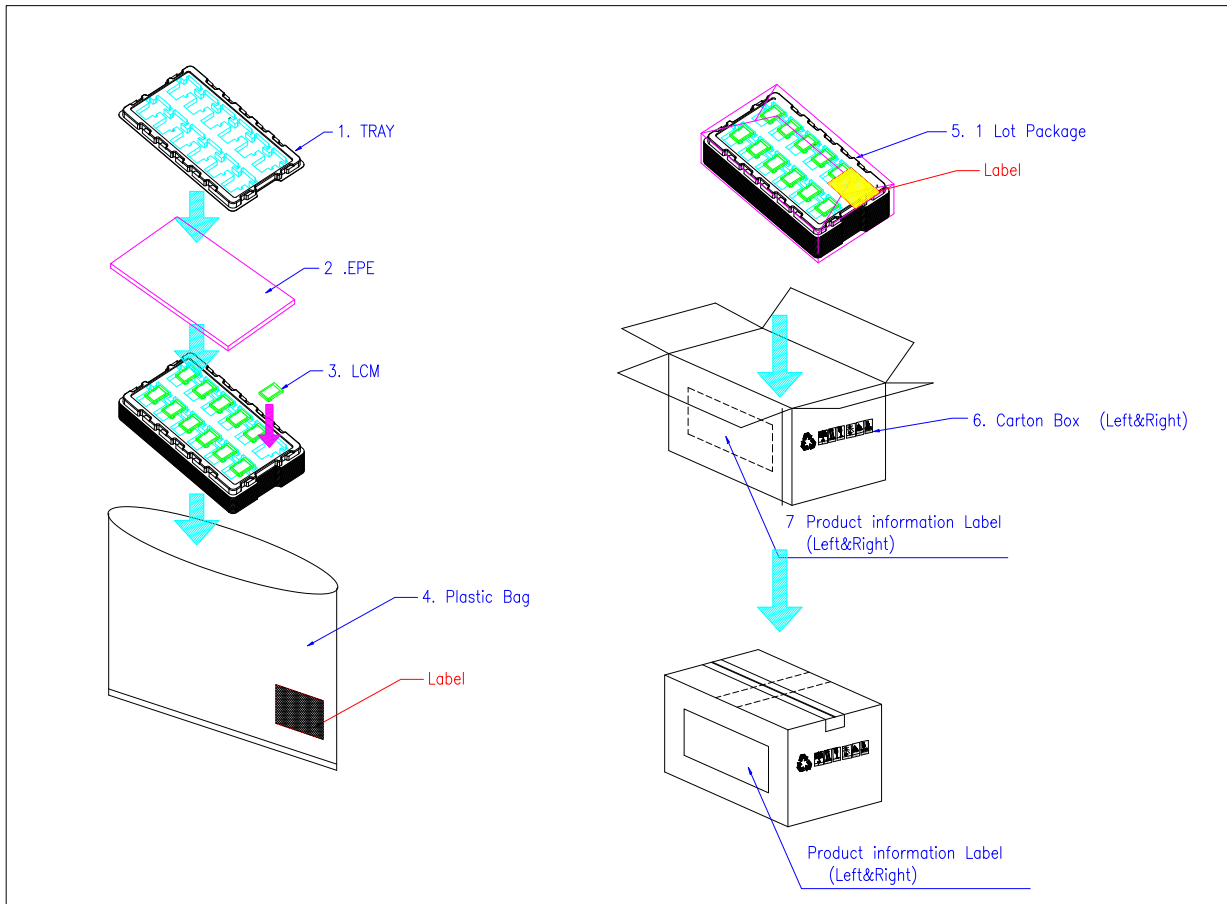
驱动板经过一系列的可靠性实验测试: 高低温, ESD, 脉冲, 辐射, 触摸寿命等测试, 确保产品品质, 如下图所示:

The serial port screen has undergone a series of reliability tests: high and low temperature, ESD, pulse, radiation, touch life, etc., to ensure product quality, as shown in the following figure:



## 6. 包装方式 Packing Method

### 6.1 包装方式 / Packing Method



### 6.2 产品标签 / Packing Label

TBD