

深圳市万天源光电有限公司  
**Shenzhen Wanty Photoelectric Co.,Ltd**

---

**PRODUCT:** TFT TOUCH MODULE

**MODEL NO.:** T101GBP003-V0

**SUPPLIER:** Shenzhen Wanty Photoelectric Co., Ltd

**DATE:** Dec,24,2019

# **SPECIFICATION**

Revision: 0.0

**T101GBP003-V0**

This module uses ROHS material

This specification may change without prior notice in order to improve performance or quality. Please contact Wanty department for updated specification and product status before design for this product or release of this order.



深圳市万天源光电有限公司  
**Shenzhen Wanty Photoelectric Co.,Ltd**

---

**CONTENTS**

- 1、 GENERAL INFORMATION**
- 2、 EXTERNAL DIMENSIONS**
- 3、 ABSOLUTE MAXIMUM RATINGS**
- 4、 ELECTRICAL CHARACTERISTICS**
- 5、 CTP CHARACTERISTICS**
- 6、 ELECTRO-OPTICAL CHARACTERISTICS**
- 7、 INTERFACE DESCRIPTION**
- 8、 INPUT TIMING**
- 9、 RELIABILITY TEST CONDITIONS**
- 10、 INSPECTION CRITERION**

# 深圳市万天源光电有限公司

## Shenzhen Wanty Photoelectric Co.,Ltd

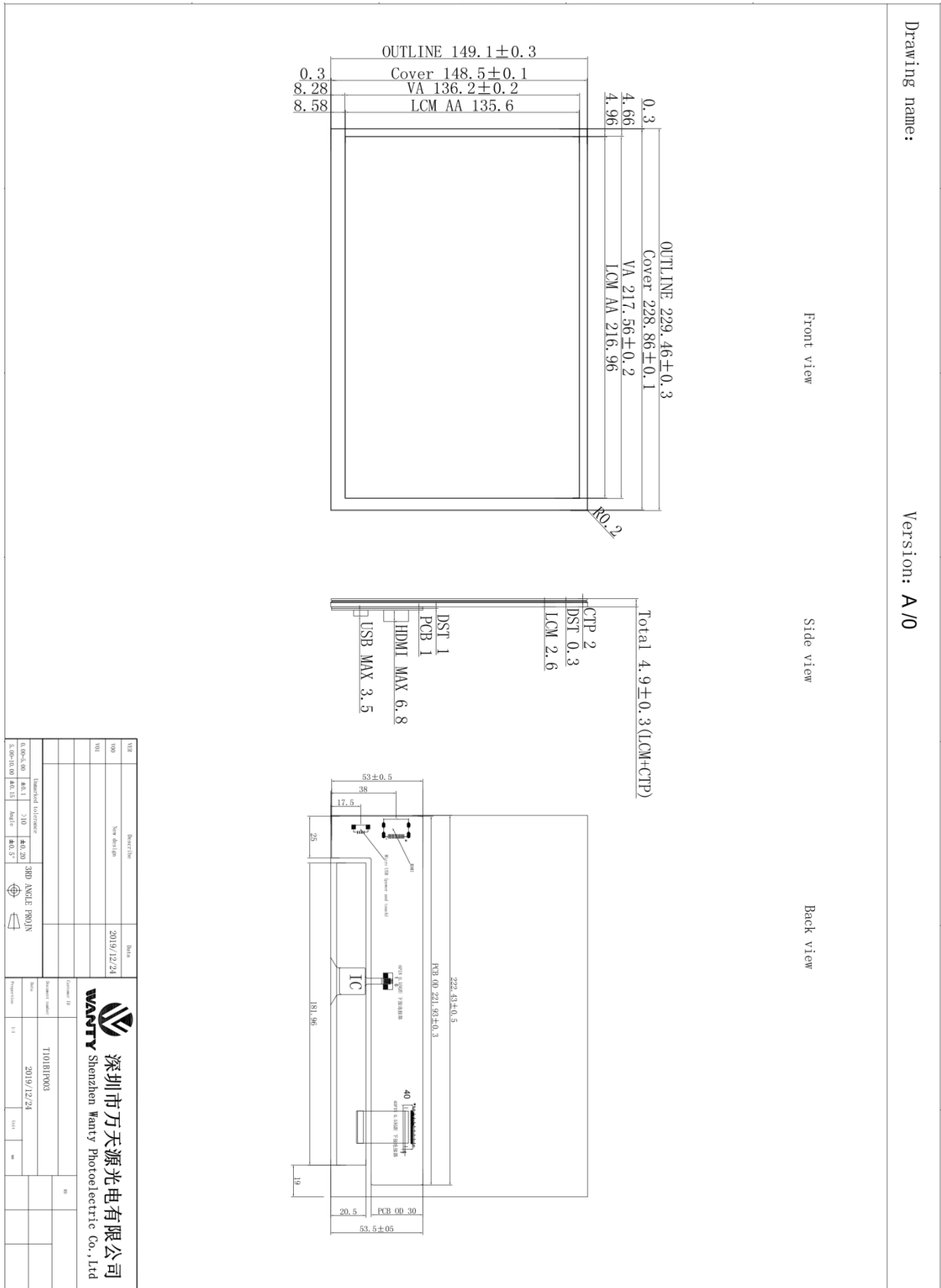
### 1、GENERAL INFORMATION

Item of general information	Contents		Unit
LCD Display Size(Diagonal)	10.1		inch
Module Structure	LCD Display + CTP Touch + PCB		-
LCD Display Type	TFT/TRANSMISSIVE		-
LCD Display Mode	Normally Black		-
Recommended Viewing Direction	Free		-
Gray inversion Direction	Free		-
Module size (W×H×T)	229.46×149.10×4.90		mm
Active area (W×H)	216.96×135.60		mm
Number of pixels(Resolution)	1280RGB×800		pixel
Pixel pitch (W×H)	0.1695×0.1695		mm
Color Pixel Arrangement	RGB Stripe		-
Module Interface Type	LCD Display	HDMI interface	-
	CTP I2C	USB interface	-
System Support	Win7/Win8/Win10(Plug and play)		-
	Android/Linux (need to be configured first)		-
Power Supply	USB(5.0V)		-
Module Power consumption	800(Typ.)		mA
Color Numbers	16.7M		-
Backlight Type	White LED		-

# 深圳市万天源光电有限公司

## Shenzhen Wanty Photoelectric Co.,Ltd

### 2、EXTERNAL DIMENSIONS



# 深圳市万天源光电有限公司

## Shenzhen Wanty Photoelectric Co.,Ltd

---

### 3、ABSOLUTE MAXIMUM RATINGS

Parameter of absolute maximum ratings	Symbol	Min	Max	Unit
Operating temperature	Top	-10	60	°C
Storage temperature	Tst	-20	70	°C
Humidity	RH	-	90%(Max 60°C)	RH

Note: Absolute maximum ratings means the product can withstand short-term, not more than 120 hours. If the product is a long time to withstand these conditions, the life time would be shorter.

### 4、ELECTRICAL CHARACTERISTICS(DC CHARACTERISTICS)

Parameter of DC characteristics	Symbol	Min.	Typ.	Max.	Unit
PCB operating voltage	VCC5V	-	5.0	-	V
LCD I/O operating voltage	VDD	2.3	2.5	2.7	V
Input voltage 'H' level	VIH	0.8*VDD	-	VDD	V
Input voltage 'L' level	VIL	VSS	-	0.2*VDD	V
Output voltage 'H' level	VOH	VDD-0.4	-	VDD	V
Output voltage 'L' level	VOL	VSS	-	VSS+0.4	V

**深圳市万天源光电有限公司**  
**Shenzhen Wanty Photoelectric Co.,Ltd**

---

**5、CTP CHARACTERISTICS**

<b>Item of CTP characteristics</b>	<b>Specification</b>	<b>Unit</b>	<b>Remark</b>
Panel Type	Glass Cover + Glass Sensor	-	-
Resolution	1280 × 800	pixel	-
Surface Hardness	6H	-	-
Transparency	≥86%	-	-
Driver IC	-	-	-
Interface Type	USB interface	-	-
Support Points	10	-	-
Sampling Rate	20~100	Hz	-
Supply voltage	3.3	V	-

# 深圳市万天源光电有限公司

## Shenzhen Wanty Photoelectric Co.,Ltd

### 6、ELECTRO-OPTICAL CHARACTERISTICS

Item of electro-optical characteristics		Symbol	Condition	Min.	Typ.	Max.	Unit	Remark	Note
Response time		Tr+Tf	θ=0 ∅=0 Ta=25℃	-	25	50	ms	FIG 1.	4
Contrast Ratio		CR		-	600	-	-	FIG 2.	1
Luminance uniformity		δWHITE		-	80	-	%	FIG 2.	3
Surface Luminance		Lv		-	200	-	cd/m2	FIG 2.	2
CIE (x, y) chromaticity	White	White x	θ=0 ∅=0 Ta=25℃	0.27	0.31	0.35	-	FIG 2.	5
		White y		0.28	0.32	0.36			
Viewing angle range	∅=90(12 o'clock)		CR ≥ 10	75	85	-	deg	FIG 3.	6
	∅=270(6 o'clock)			75	85	-	deg		
	∅=0(3 o'clock)			75	85	-	deg		
	∅=180(9 o'clock)			75	85	-	deg		
NTSC ratio		-	-	-	50	-	%	-	-

**Note 1.** Contrast Ratio(CR) is defined mathematically by the following formula. For more information see FIG 2.:

$$\text{Contrast Ratio(CR)} = \frac{\text{Average Surface Luminance with all white pixels(P1,P2,P3,P4,P5,P6,P7,P8,P9)}}{\text{Average Surface Luminance with all black pixels(P1,P2,P3,P4,P5,P6,P7,P8,P9)}}$$

**Note 2.** Surface luminance is the LCD surface from the surface with all pixels displaying white. For more information see FIG 2.

$$L_v = \text{Average Surface Luminance with all white pixels (P1,P2,P3,P4,P5,P6,P7,P8,P9)}$$

**Note 3.** The uniformity in surface luminance (δWHITE) is determined by measuring luminance at each test position 1 through 9, and then dividing the maximum luminance of 9 points luminance by minimum luminance of 9 points luminance. For more information see FIG 2.

# 深圳市万天源光电有限公司

## Shenzhen Wanty Photoelectric Co.,Ltd

$$\delta_{\text{WHITE}} = \frac{\text{Minimum Surface Luminance with all white pixels (P1, P2, P3, P4, P5, P6, P7, P8, P9)}}{\text{Maximum Surface Luminance with all white pixels (P1, P2, P3, P4, P5, P6, P7, P8, P9)}}$$

**Note 4.** The response time is defined as the LCD optical switching time interval between “White” state and “Black” state. Rise time ( $T_{ON}$ ) is the time between photo detector output intensity changed from 90% to 10%. And fall time ( $T_{OFF}$ ) is the time between photo detector output intensity changed from 10% to 90%. For more information see FIG 1.

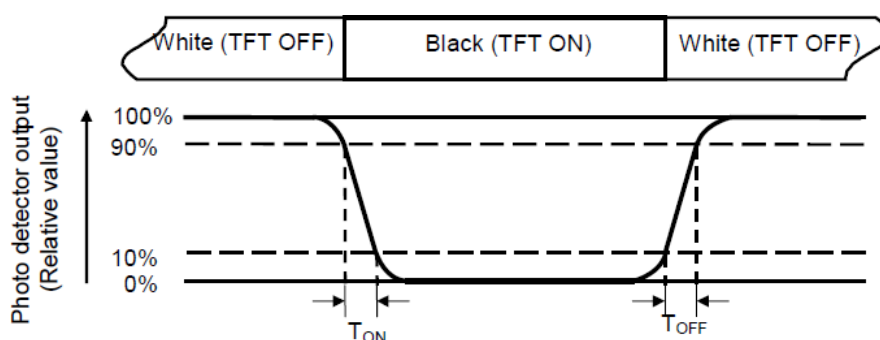
**Note 5.** CIE (x, y) chromaticity ,The x,y value is determined by screen active area position 5. For more information see FIG 2.

**Note 6.** Viewing angle is the angle at which the contrast ratio is greater than a specific value. For TFT module, the specific value of contrast ratio is 10. The angles are determined for the horizontal or x axis and the vertical or y axis with respect to the z axis which is normal to the LCD surface. For more information see FIG 3.

**Note 7.** For Viewing angle and response time testing, the testing data is base on Autronic-Melchers’s ConoScope. Series Instruments. For contrast ratio, Surface Luminance, Luminance uniformity and CIE, the testing data is base on BM-7 photo detector.

**Note 8.** For TN type TFT transmissive module, Gray scale reverse occurs in the direction of panel viewing angle.

**FIG.1. The definition of Response Time**



# 深圳市万天源光电有限公司

## Shenzhen Wanty Photoelectric Co.,Ltd

**FIG.2. Measuring method for Contrast ratio, surface luminance, Luminance**

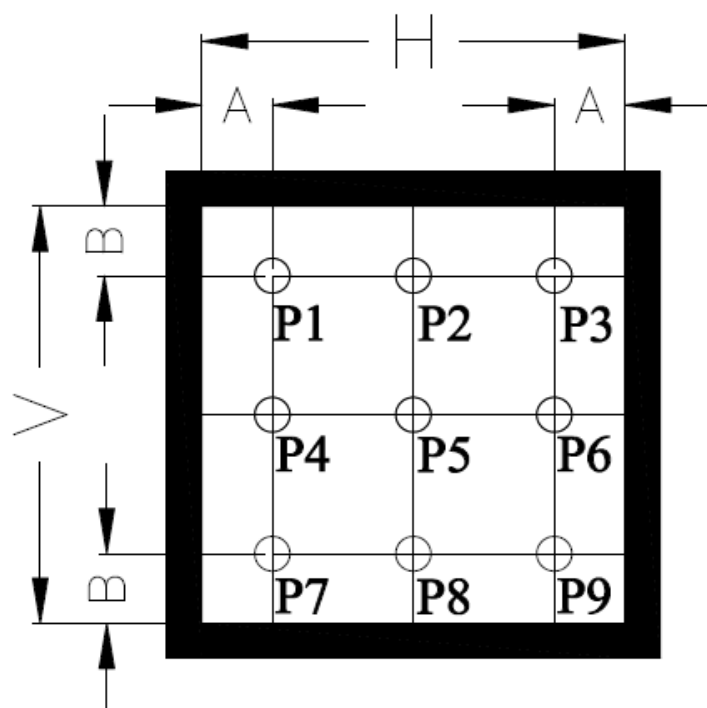
**uniformity, CIE (x , y) chromaticity**

A :  $H/6$  ;

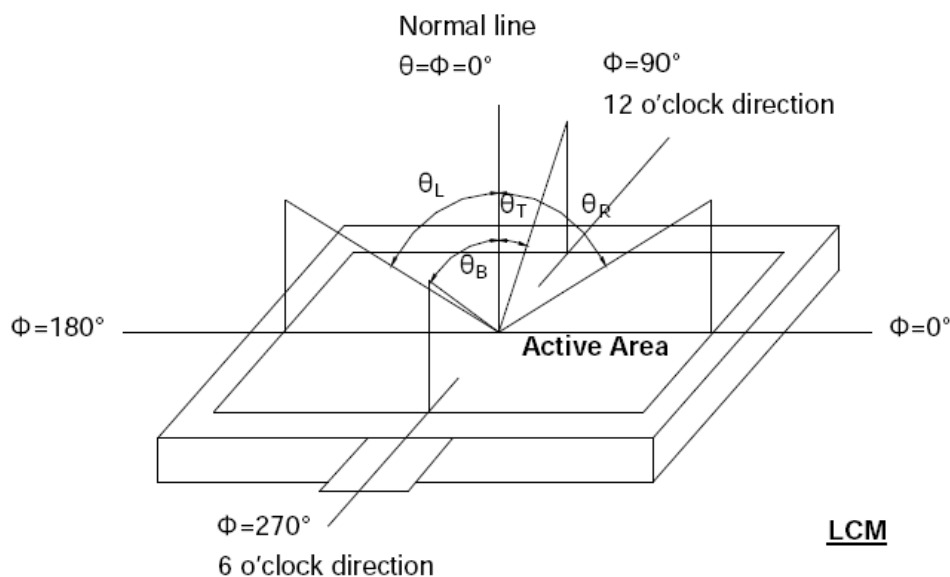
B :  $V/6$  ;

H,V : Active Area(AA) size

Measurement instrument: BM-7; Light spot size=5mm, 350mm distance from the LCD surface to detector lens.



**FIG.3. The definition of viewing angle**



# 深圳市万天源光电有限公司

## Shenzhen Wanty Photoelectric Co.,Ltd

### 7、INTERFACE DESCRIPTION

#### A、HDMI (Type A)Interface Description

NO.	Symbol	DESCRIPTION
1	TMDS Data2+	Positive side of channel 2 TMDS low-voltage signal differential input pair
2	TMDS Data2 Shield	Ground
3	TMDS Data2-	Negative side of channel 2 TMDS low-voltage signal differential input pair
4	TMDS Data1+	Positive side of channel 1 TMDS low-voltage signal differential input pair
5	TMDS Data1 Shield	Ground
6	TMDS Data1-	Negative side of channel 1 TMDS low-voltage signal differential input pair
7	TMDS Data0+	Positive side of channel 0 TMDS low-voltage signal differential input pair
8	TMDS Data0 Shield	Ground
9	TMDS Data0-	Negative side of channel 0 TMDS low-voltage signal differential input pair
10	TMDS Clock+	Positive side of reference clock. TMDS low-voltage signal differential input pair
11	TMDS Clock Shield	Ground
12	TMDS Clock-	Negative side of reference clock. TMDS low-voltage signal differential input pair
13	CEC	No Connection
14	Reserved(N.C.)	No Connection
15	SCL	DDC SCL
16	SDA	DDC SDA
17	DDC/CEC Ground	Ground
18	+5V Power	+5V Power
19	Hot Plug Detect	Hot Plug Detect

#### B、Micro USB TOUCH Interface Description

NO.	Symbol	DESCRIPTION
1	VUSB	USB Power
2	D-	USB Data-
3	D+	USB Data+
4	NC	No connection
5	GND	Power Ground

# 深圳市万天源光电有限公司

## Shenzhen Wanty Photoelectric Co.,Ltd

**Application Note: Please connect the USB first, and then connect the HDMI**

### 8、LCD TIMING

**LCD Timing Table**

Parameter	Symbol	Value			Unit
		Min.	Typ.	Max.	
DCLK frequency@ Frame rate=60Hz	DCLK	68.9	71.1	73.4	MHz
Horizontal display area	thd	1280			DCLK
1 Horizontal Line	th	1340	1440	1470	DCLK
HSYNC pulse width	thpw	-	10	-	DCLK
HSYNC Back Porch(Blanking)	thb	-	80	-	DCLK
HSYNC Front Porch	thfp	-	70	-	DCLK
Vertical display area	tvd	800			H
VSYNC period time	tv	815	823	833	H
VSYNC pulse width	tvpw	-	3	-	H
VSYNC Back Porch(Blanking)	tvb	-	10	-	H
VSYNC Front Porch	tvfp	-	10	-	H

# 深圳市万天源光电有限公司

## Shenzhen Wanty Photoelectric Co.,Ltd

### 9、RELIABILITY TEST CONDITIONS

No.	Test Item	Test Condition
1	High Temperature Storage	70°C/120 hours
2	Low Temperature Storage	-20°C/120 hours
3	High Temperature Operating	60°C/120 hours
4	Low Temperature Operating	-10°C/120 hours
5	Temperature Cycle Storage	-10°C(30min.)~25(5min.)~60°C(30min.)×10cycles

#### A、 Inspection after test:

Inspection after 2~4 hours storage at room temperature, the sample shall be free from defects:

- Air bubble in theLCD;
- Sealleak;
- Non-display;
- Missingsegments;
- Glasscrack;
- Current is twice higher than initialvalue.

#### B、 Remark:

- The test samples should be applied to only one testitem.
- Sample size for each test item is5~10pcs.
- Failure Judgment Criterion: Basic Specification, Electrical Characteristic,Mechanical Characteristic, Optical Characteristic.

# 深圳市万天源光电有限公司

## Shenzhen Wanty Photoelectric Co.,Ltd

---

### 10、 INSPECTION CRITERION

This specification is made to be used as the standard of acceptance/rejection criteria for TFT-LCD/IPS TFT-LCD module product, and this specification is applicable only in the case that the size of module equal to or exceed than 4.3 inch.

#### 10.1 Sampleplan

Sampling plan according to GB/T2828.1-2003/ISO 2859-1: 1999 and ANSI/ASQC Z1.4-1993,normal level 2 and based on:

Major defect: AQL 0.65

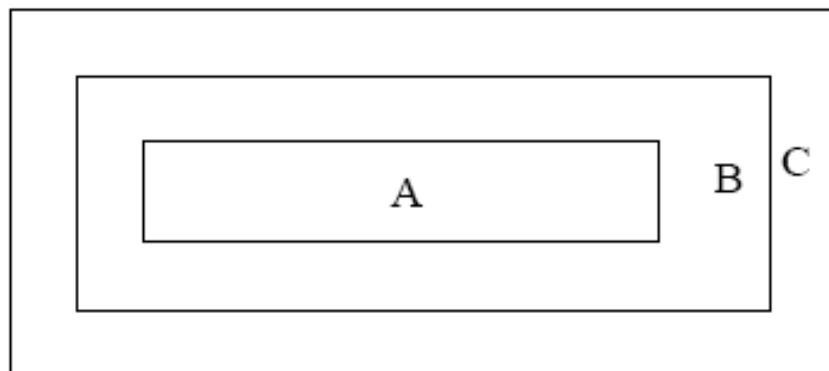
Minor defect: AQL 1.5

#### 10.2 Inspectioncondition

Viewing distance for cosmetic inspection is about 30cm with bare eyes, and under an environment of 20~40W light intensity, all directions for inspecting the sample should be within 45° against perpendicular line. (Normal temperature 20~25°C and normal humidity 60 ±15%RH )

#### 10.3 Definition of InspectionItem.

A 、 Definition of inspection zone in LCD.



# 深圳市万天源光电有限公司

## Shenzhen Wanty Photoelectric Co.,Ltd

---

Zone A: character/Digit area

Zone B: viewing area except Zone A (Zone A + Zone B=minimum Viewing area)

Zone C: Outside viewing area (invisible area after assembly in customer's product)

Fig.1 Inspection zones in an LCD

Note: As a general rule, visual defects in Zone C are permissible, when it is no trouble for quality and assembly of customer's product.

### B 、 Definition of some visual defect

Bright dot	Because of losing all or part function, bad pixel dots appear bright and the size is more than 50% of one dot in which LCD panel is displaying under black pattern.
Dark dot	Dots appear dark and unchanged in size in which LCD panel is displaying under pure red, green, blue picture, or pure whiter picture.

### 10.4 MajorDefect

Item No.	Items to be inspected	Inspection standard	Classification of defects
1	Functional defects	1) Nodisplay 2) Display abnormally 3) Missing vertical, horizontalsegment 4) Shortcircuit 5) Excess powerconsumption 6)Backlight no lighting, flickering and abnormal lighting	major
2	Missing	Missing component	
3	Outline dimension	Overall outline dimension beyond the drawing is not allowed	

# 深圳市万天源光电有限公司

## Shenzhen Wanty Photoelectric Co.,Ltd

### 10.5、Minor Defect

Item No.	Items to be inspected	Inspection standard					Classification of defects	
1	Bright dot /dark dot defect	Zone		Acceptable Qty			Minor	
		/		A+B				C
				4.3''~7''	7~10.1''	>10.1''		
		Bright pixel dot	1	2	3	Acceptable		
		Dark pixel dot	4	4	4			
		2bright dots adjacent	0	0	0			
		2dark dots adjacent	0	0	0			
		Total bright and dark dots	5	6	7			
<p>Note: Minimum distance between defective dots is more than 5mm; Pixel dots' function is normal, but bright dots caused by foreign material and other reasons are judged by the dot defect of 5.2.</p>								
2		Zone		Acceptable Qty			Minor	
		/		A+B				C
				4.3''~7''	7~10.1''	>10.1''		
		Size(mm)	4.3''~7''	7~10.1''	>10.1''	Acceptable		
		$\Phi \leq 0.2$	Acceptable	Acceptable	Acceptable			
		$0.2 < \Phi \leq 0.5$	4	5	6			
		$\Phi > 0.5$	0	0	0			
<p>Note: 1. Minimum distance between defective dots is more than 5 mm; 2. The quantity of defect is zero in operating condition.</p>								
3	Linear defect	Zone		Acceptable Qty			Minor	
		/		A+B				C
				Length	Width	4.3''~7''		
		Ignore	$W \leq 0.05$	Acceptable	Acceptable	Acceptable		Acceptable
		$L \leq 5.0$	$0.05 < W \leq 0.1$	4	5	6		
		$L > 5.0$	$W > 0.1$	0	0	0		

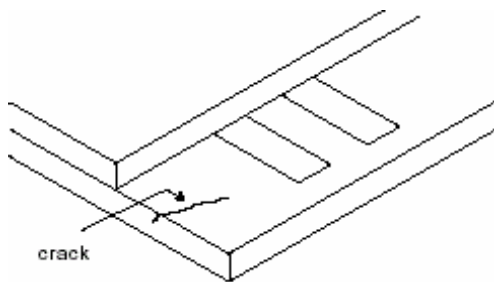
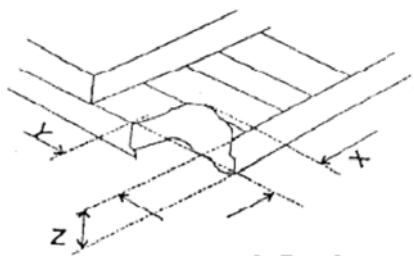
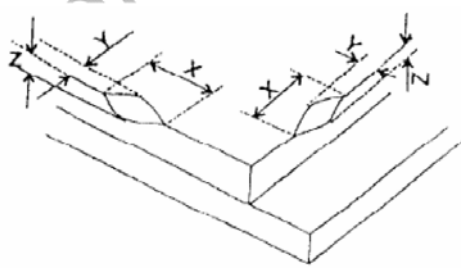
# 深圳市万天源光电有限公司

## Shenzhen Wanty Photoelectric Co.,Ltd

4	Polarizer defect	<p>5.4.1 Polarizer Position</p> <p>(i) Shifting in position should not exceed the glass outline dimension.</p> <p>(ii) Incomplete covering of the viewing area due to shifting is not allowed.</p> <p>5.4.2 Dirt on polarizer</p> <p>Dirt which can be wiped easily should be acceptable.</p> <p>5.4.3 Polarizer Dent &amp; Air bubble</p> <table border="1" style="width: 100%; border-collapse: collapse; margin-bottom: 10px;"> <thead> <tr> <th colspan="2" rowspan="2">Zone</th> <th colspan="3">Acceptable Qty</th> <th rowspan="2">C</th> </tr> <tr> <th colspan="3">A+B</th> </tr> <tr> <th rowspan="2">Size(mm)</th> <th colspan="2"></th> <th>4.3"~7"</th> <th>7~10.1"</th> <th>&gt;10.1"</th> <th rowspan="2">Acceptable</th> </tr> </thead> <tbody> <tr> <td><math>\Phi \leq 0.2</math></td> <td colspan="2">Acceptable</td> <td>Acceptable</td> <td>Acceptable</td> <td>Acceptable</td> </tr> <tr> <td><math>0.2 &lt; \Phi \leq 0.5</math></td> <td colspan="2">4</td> <td>5</td> <td>6</td> <td></td> </tr> <tr> <td><math>\Phi &gt; 0.5</math></td> <td colspan="2">0</td> <td>0</td> <td>0</td> <td></td> </tr> </tbody> </table> <p>5.4.4 Polarizer scratch</p> <p>(i) If the polarizer scratch can be seen after cover assembling or in the operating condition, judge by the linear defect of 5.3.</p> <p>(ii) If the polarizer scratch can be seen only in non-operating condition or some special angle, judge by the following:</p> <table border="1" style="width: 100%; border-collapse: collapse;"> <thead> <tr> <th colspan="2" rowspan="2">Zone</th> <th colspan="3">Acceptable Qty</th> <th rowspan="2">C</th> </tr> <tr> <th colspan="3">A+B</th> </tr> <tr> <th rowspan="2">Length</th> <th rowspan="2">Width</th> <th colspan="2"></th> <th>4.3"~7"</th> <th>7~10.1"</th> <th>&gt;10.1"</th> <th rowspan="2">Acceptable</th> </tr> </thead> <tbody> <tr> <td>Ignore</td> <td><math>W \leq 0.05</math></td> <td>Acceptable</td> <td>Acceptable</td> <td>Acceptable</td> <td>Acceptable</td> </tr> <tr> <td><math>1.0 &lt; L \leq 5.0</math></td> <td><math>0.05 &lt; W \leq 0.20</math></td> <td>4</td> <td>5</td> <td>6</td> <td></td> </tr> <tr> <td><math>L &gt; 5.0</math></td> <td><math>W &gt; 0.2</math></td> <td>0</td> <td>0</td> <td>0</td> <td></td> </tr> </tbody> </table>	Zone		Acceptable Qty			C	A+B			Size(mm)			4.3"~7"	7~10.1"	>10.1"	Acceptable	$\Phi \leq 0.2$	Acceptable		Acceptable	Acceptable	Acceptable	$0.2 < \Phi \leq 0.5$	4		5	6		$\Phi > 0.5$	0		0	0		Zone		Acceptable Qty			C	A+B			Length	Width			4.3"~7"	7~10.1"	>10.1"	Acceptable	Ignore	$W \leq 0.05$	Acceptable	Acceptable	Acceptable	Acceptable	$1.0 < L \leq 5.0$	$0.05 < W \leq 0.20$	4	5	6		$L > 5.0$	$W > 0.2$	0	0	0		Minor
Zone		Acceptable Qty			C																																																																			
		A+B																																																																						
Size(mm)			4.3"~7"	7~10.1"	>10.1"	Acceptable																																																																		
	$\Phi \leq 0.2$	Acceptable		Acceptable	Acceptable		Acceptable																																																																	
$0.2 < \Phi \leq 0.5$	4		5	6																																																																				
$\Phi > 0.5$	0		0	0																																																																				
Zone		Acceptable Qty			C																																																																			
		A+B																																																																						
Length	Width			4.3"~7"	7~10.1"	>10.1"	Acceptable																																																																	
		Ignore	$W \leq 0.05$	Acceptable	Acceptable	Acceptable		Acceptable																																																																
$1.0 < L \leq 5.0$	$0.05 < W \leq 0.20$	4	5	6																																																																				
$L > 5.0$	$W > 0.2$	0	0	0																																																																				
5	MURA	Using 3% ND filter, it's NG if it can be seen in R,G,B picture.	Minor																																																																					
	White/Black dot (MURA)	Visible under: ND3%; $D \leq 0.15\text{mm}$ , Acceptable; $0.15\text{mm} < D \leq 0.5\text{mm}$ , $N \leq 4$ ; $D > 0.5\text{mm}$ , Not allowable.																																																																						

# 深圳市万天源光电有限公司

## Shenzhen Wanty Photoelectric Co.,Ltd

6	Glass defect	<p>(i) Crack Cracks are not allowed.</p> 	Minor								
		<p>(ii) TFT chips on corner</p>  <table border="1" style="width: 100%; border-collapse: collapse; margin-top: 10px;"> <thead> <tr> <th style="width: 25%;">X</th> <th style="width: 25%;">Y</th> <th style="width: 25%;">Z</th> <th style="width: 25%;">Acceptable</th> </tr> </thead> <tbody> <tr> <td style="text-align: center;"><math>\leq 3.0</math></td> <td style="text-align: center;"><math>\leq 3.0</math></td> <td style="text-align: center;">Not more than the thickness of glass</td> <td style="text-align: center;"><math>N \leq 3</math></td> </tr> </tbody> </table> <p>hips on the corner of terminal shall not be allowed to extend into the ITO pad or expose perimeter seal.</p>	X	Y	Z	Acceptable	$\leq 3.0$	$\leq 3.0$	Not more than the thickness of glass	$N \leq 3$	Minor
		X	Y	Z	Acceptable						
$\leq 3.0$	$\leq 3.0$	Not more than the thickness of glass	$N \leq 3$								
<p>(iii) Usual surface crack</p>  <table border="1" style="width: 100%; border-collapse: collapse; margin-top: 10px;"> <thead> <tr> <th style="width: 25%;">X</th> <th style="width: 25%;">Y</th> <th style="width: 25%;">Z</th> <th style="width: 25%;">Acceptable</th> </tr> </thead> <tbody> <tr> <td style="text-align: center;"><math>\leq 1.5</math></td> <td style="text-align: center;"><math>\leq 1.5</math></td> <td style="text-align: center;">Not more than the thickness of glass</td> <td style="text-align: center;"><math>N \leq 4</math></td> </tr> </tbody> </table> <p style="text-align: center;">It is only applicable to the upper glass of LCD.</p>	X	Y	Z	Acceptable	$\leq 1.5$	$\leq 1.5$	Not more than the thickness of glass	$N \leq 4$	Minor		
X	Y	Z	Acceptable								
$\leq 1.5$	$\leq 1.5$	Not more than the thickness of glass	$N \leq 4$								

# 深圳市万天源光电有限公司

## Shenzhen Wanty Photoelectric Co.,Ltd

### 10.6 Module Cosmetic Criteria

Item No.	Items to be inspected	Inspection Standard	Classification of defects
1	Difference in Spec.	Not allowable	Major
2	Pattern peeling	No substrate pattern peeling and floating	Major
3	Soldering defects	No soldering missing	Major
		No soldering bridge	Major
		No cold soldering	Minor
4	Resist flaw on PCB	Visible copper foil ( $\Phi 0.5$ mm or more) on substrate pattern is not allowed	Minor
5	FPC gold finger	No dirt, breaking, oxidation lead to black	Major
6	Backlight plastic frame	No deformation, crack, breaking, backlight positioning column breaking, obvious nick.	Minor
7	Marking printing effect	No dark marking, incomplete, deformation lead to unable to judge	Minor
8	Accretion of metallic Foreign matter	No accretion of metallic foreign matter (Not exceed $\Phi 0.2$ mm)	Minor
9	Stain	No stain to spoil cosmetic badly	Minor
10	Plate discoloring	No plate fading, rusting and discoloring	Minor
11	1. Lead parts	a. Soldering side of PCB Solder to form a 'Filet' all around the lead. Solder should not hide the lead form perfectly.	Minor
		b. Components side(In case of 'Through Hole PCB') Solder to reach the Components side of PCB.	Minor
	2. Flat packages	Either 'Toe'(A) or 'Seal'(B)of the lead to be covered by "Filet". Lead form to be assume over Solder.	Minor
	3. Chips	$(3/2) H \geq h \geq (1/2) H$	Minor
4. Solder ball/Solder splash	a. The spacing between solder ball and the conductor or solder pad $h \geq 0.13$ mm. The diameter of solder ball $d \leq 0.15$ mm.	Minor	
	b. The quantity of solder balls or solder splashes isn't beyond 5 in 600 mm <sup>2</sup> .	Minor	
	c. Solder balls/Solder splashes do not violate minimum electrical clearance.	Major	

