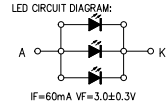
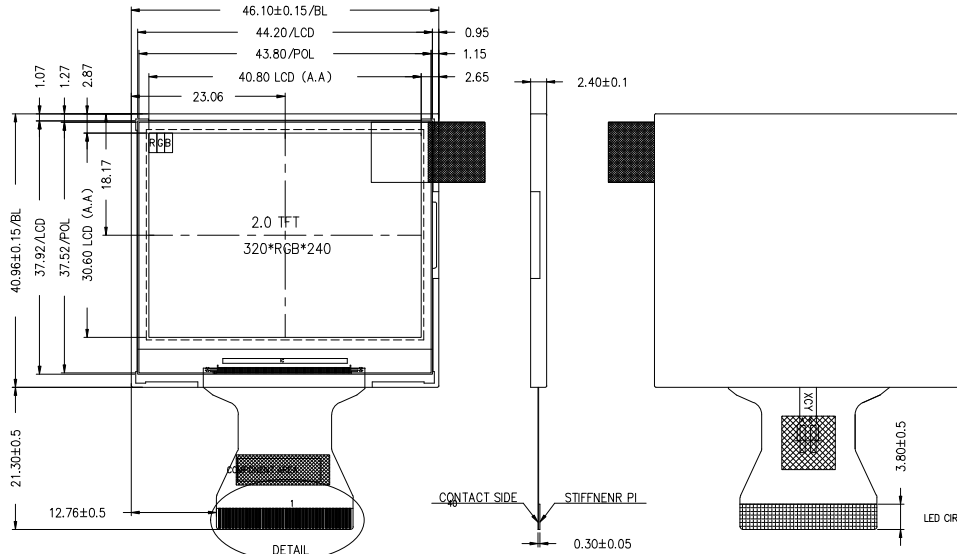


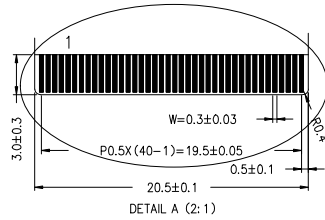
REVISE	Revision note	DATE	NAME
V0	First	2018.03.22	lukangyan

Pin	Definition
1	NC
2	NC
3	NC
4	NC
5	NC
6	NC
7	NC
8	NC
9	NC
10	VCOM
11	VCOMH
12	OND
13	NC
14	AVDD
15	NC
16	NC
17	NC
18	NC
19	LED_K
20	NC
21	NC
22	LED_A
23	OND
24	VDD
25	VDDNC
26	HSYNC
27	DCLK
28	OND
29	OND
30	DRO
31	DB1
32	DB2
33	DB3
34	DB4
35	DB5
36	DBA
37	SSL
38	CS
39	NC
40	RES



NOTES:

1. DISPLAY TYPE: 2.0" TFT TRANSMISSIVE
2. VIEWING DIRECTION : U/L/D/R 80/80/80/80
3. Driver IC : ILI9342C
4. Top : -20°C ~ 70°C, Tst : -30°C ~ 80°C
5. GENERAL TOLERANCE: ±0.2
6. LCM Luminance: LED/150cd/m (Typical) ²



40

 ART 旭虹科技 <small>ART SYSTEM TECHNOLOGY</small>		杭州旭虹科技有限公司 Hangzhou Xu Hong Technology Co., Ltd http://www.hzxuhong.com	
Approved By		SIZE:	TFT_LCD 2.0"
Checked By		DWARNING_NO.:	XH-T020LL1-01
Drawn By	LYY	CUSTOMER_NO.	
UNIT:mm			