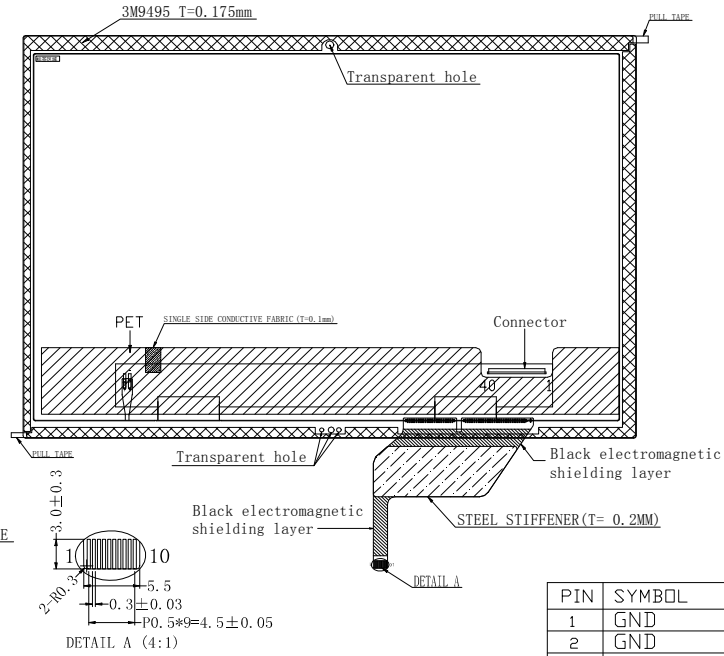
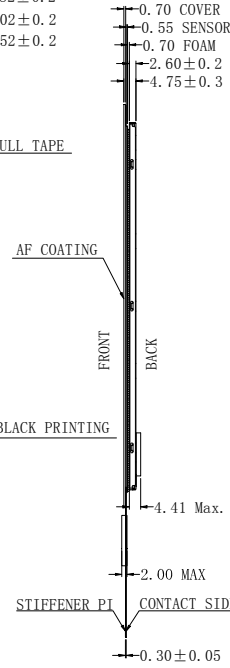
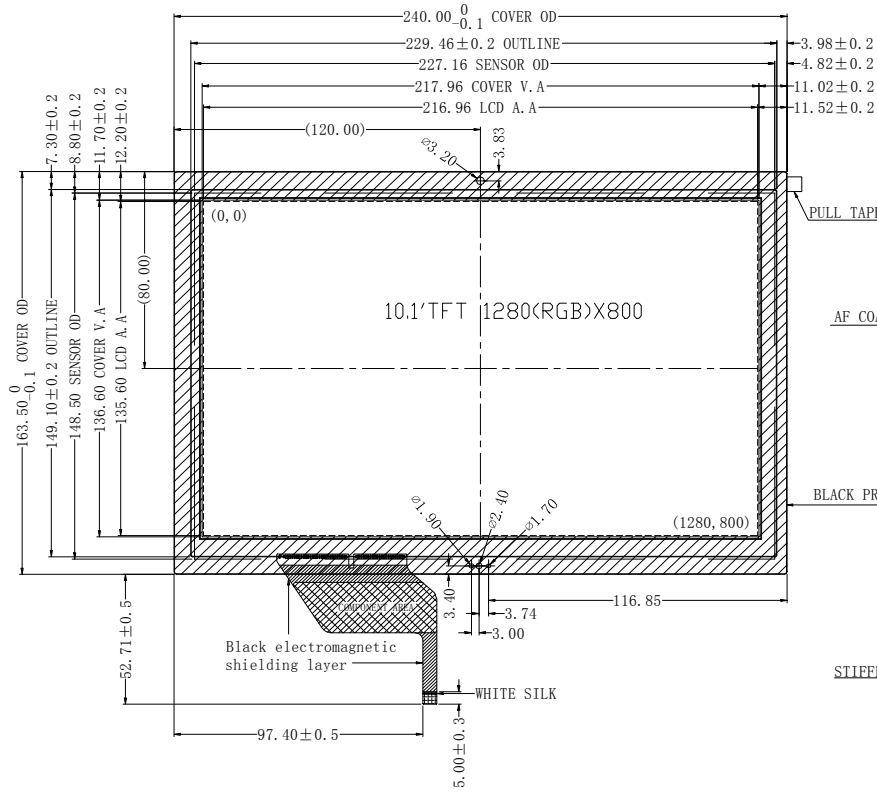


REVISE	Revision note	DATE	NAME
V0	First	2018.11.10	SUKANGYAN
V1	CHANGE THE D. S. T & CHANGE THE TOLERANCE	2018.11.27	SUKANGYAN

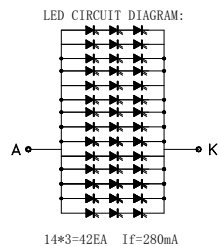


PIN FUCTION	
PIN	SYMBOL
1	VCOM
2	VDD
3	VDD
4	NC
5	NC
6	NC
7	GND
8	Rxin0-
9	Rxin0+
10	GND
11	Rxin1-
12	Rxin1+
13	GND
14	Rxin2-
15	Rxin2+
16	GND
17	RxCCLK-
18	RxCCLK+
19	GND
20	Rxin3-
21	Rxin3+
22	GND
23	NC
24	NC
25	GND
26	NC
27	LED_PWM
28	NC
29	AVDD
30	GND
31	LED-
32	LED-
33	NC
34	NC
35	VGL
36	NC
37	CABC_EN
38	VGH
39	LED+
40	LED+

PIN	SYMBOL
1	GND
2	GND
3	VDD<3.3V>
4	VDD<3.3V>
5	SCL<1.8V>
6	SDA<1.8V>
7	RES<1.8V>
8	INT<1.8V>
9	GND
10	GND

NOTES:

1. DISPLAY TYPE: 10.1" TFT, NORMALLY BLACK
2. VIEWING DIRECTION : U/L/D/R 80/80/80/80
3. CONNECTOR: F62240-H1210A
4. CTP Driver IC :GT928
5. Top : -20°C ~ 70°C, Tst : -30°C ~ 80°C
6. GENERAL TOLERANCE: ±0.2
7. LCM Luminance: LED/350cd/m (Typical)



ART
旭虹科技
AsahI Raytron Technology

Approved By	
Checked By	
Drawn By	SUKANGYAN
UNIT:mm	

杭州旭虹科技有限公司

<http://www.hzxuhong.com>

SIZE: TFT_LCD 10.1"

DWARING_NO. : XH-T101QIH-31CP

CUSTOMER_NO.